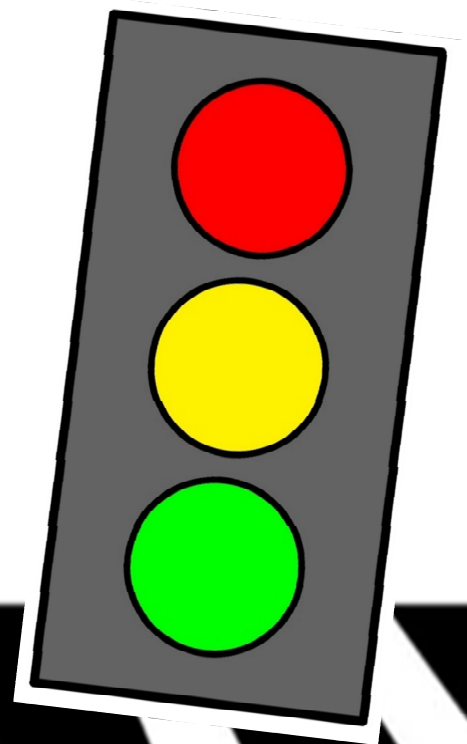


Safer Places to Cross

Newcastle
City Council 



Contents

Topic	Page
Crossing the Road	2
Zebra Crossing	3
Puffin Crossing	4
Toucan Crossing	5
Pelican Crossing	6
Pegasus/Equestrian Crossing	7
School Patrol Crossing	8
Other Crossings	9
Crossing Between Parked Cars	10
Crossing without a Pedestrian Crossing	11
Top Tips	12

Crossing the Road

There are many ways we can cross the road safely. You may know some already, but you should hopefully learn a lot of new ones too!

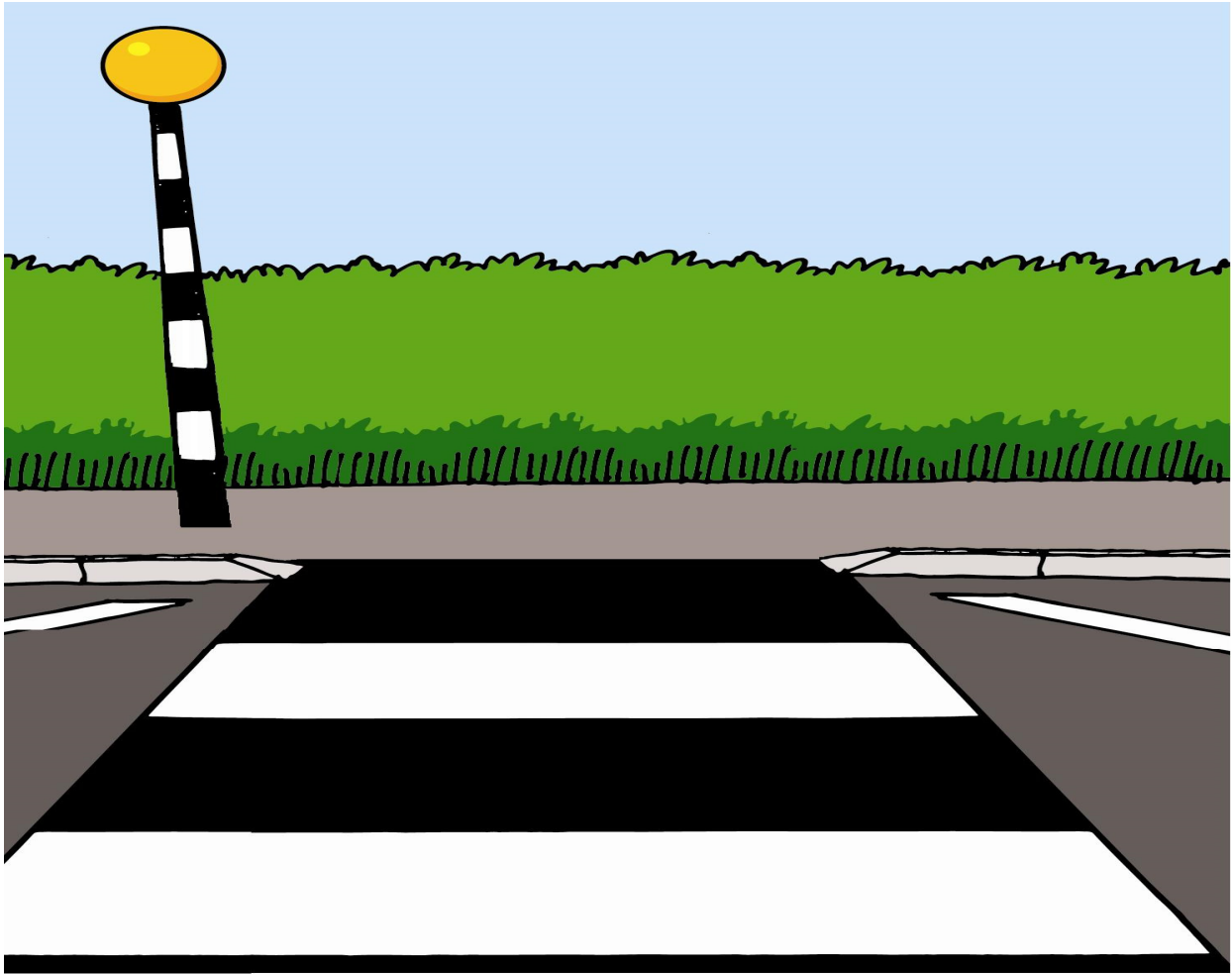
You don't always presume that because it is a crossing it is safe. Car drivers may get distracted and go straight through a crossing.

To avoid any accidents, always use the Green Cross Code.

Green Cross Code

1. Think  Is this a safe place to cross the road?
2. Stop  Feet flat on pavement back from the kerb.
3. Look  All around for traffic.
4. Wait  If traffic is coming, let it pass.
5. Look and listen again   We can hear traffic too.
6. Arrive alive!   Keep looking while you cross.

Zebra Crossing



Stand back from the edge and wait for the traffic to stop. Make sure the driver has seen you and has stopped. Check that no other traffic is overtaking them.

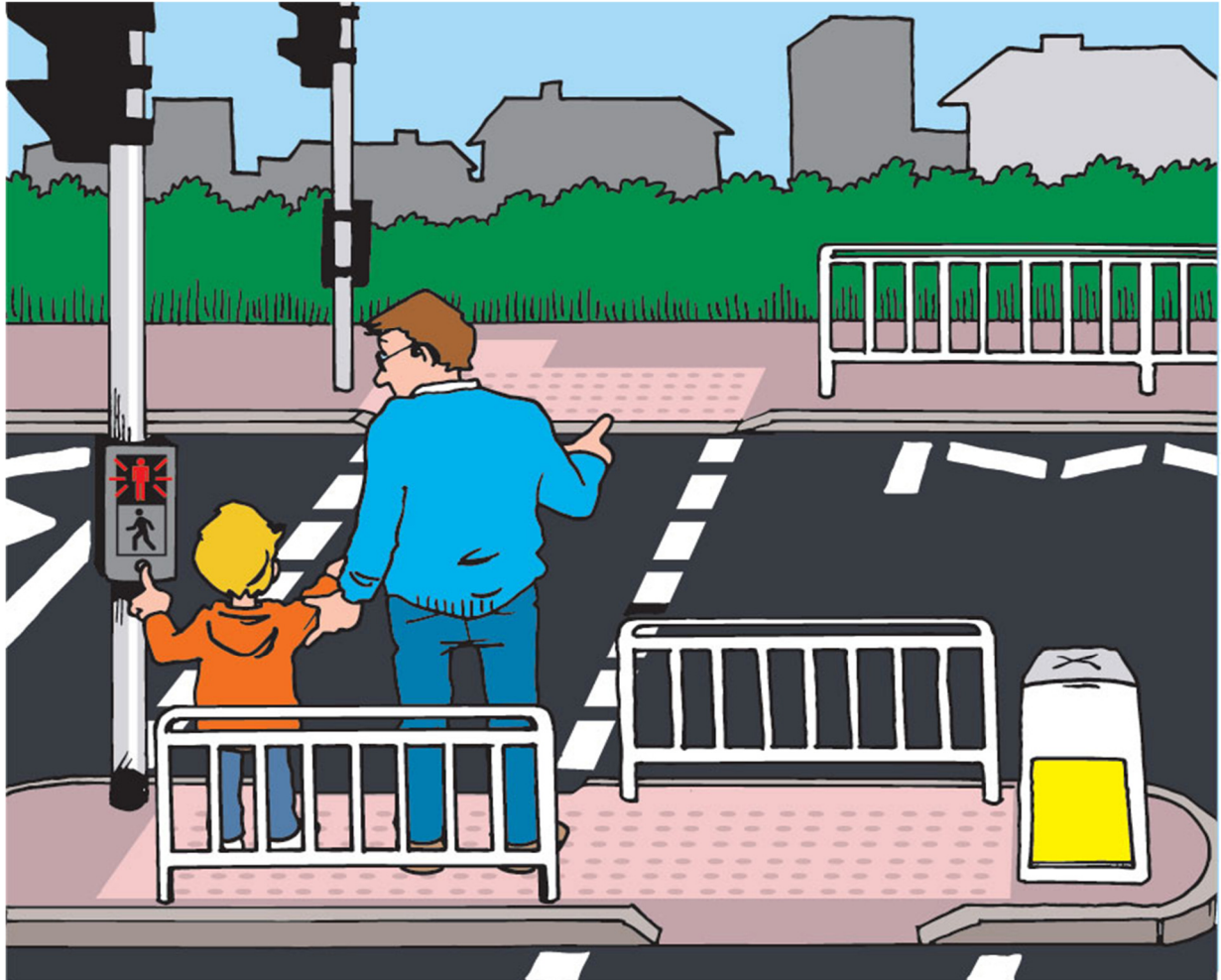
Once you are sure the cars have stopped and it is safe, and you have completed all your Green Cross Code checks, walk across in a straight line.

BUT....

Sometimes drivers don't always follow the rules and fail to stop. We therefore cannot presume all cars will stop; we need to follow all steps to ensure it is safe.

Puffin Crossing

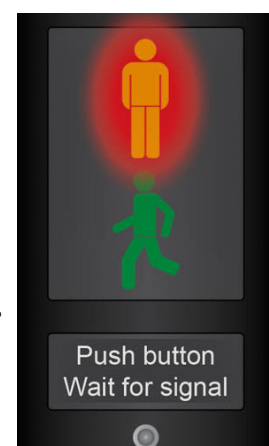
PUFFIN = Pedestrian User Friendly Intelligent Crossing



Cameras on top to detect how long to stop the traffic for, depending on how long it takes for you to cross the road.

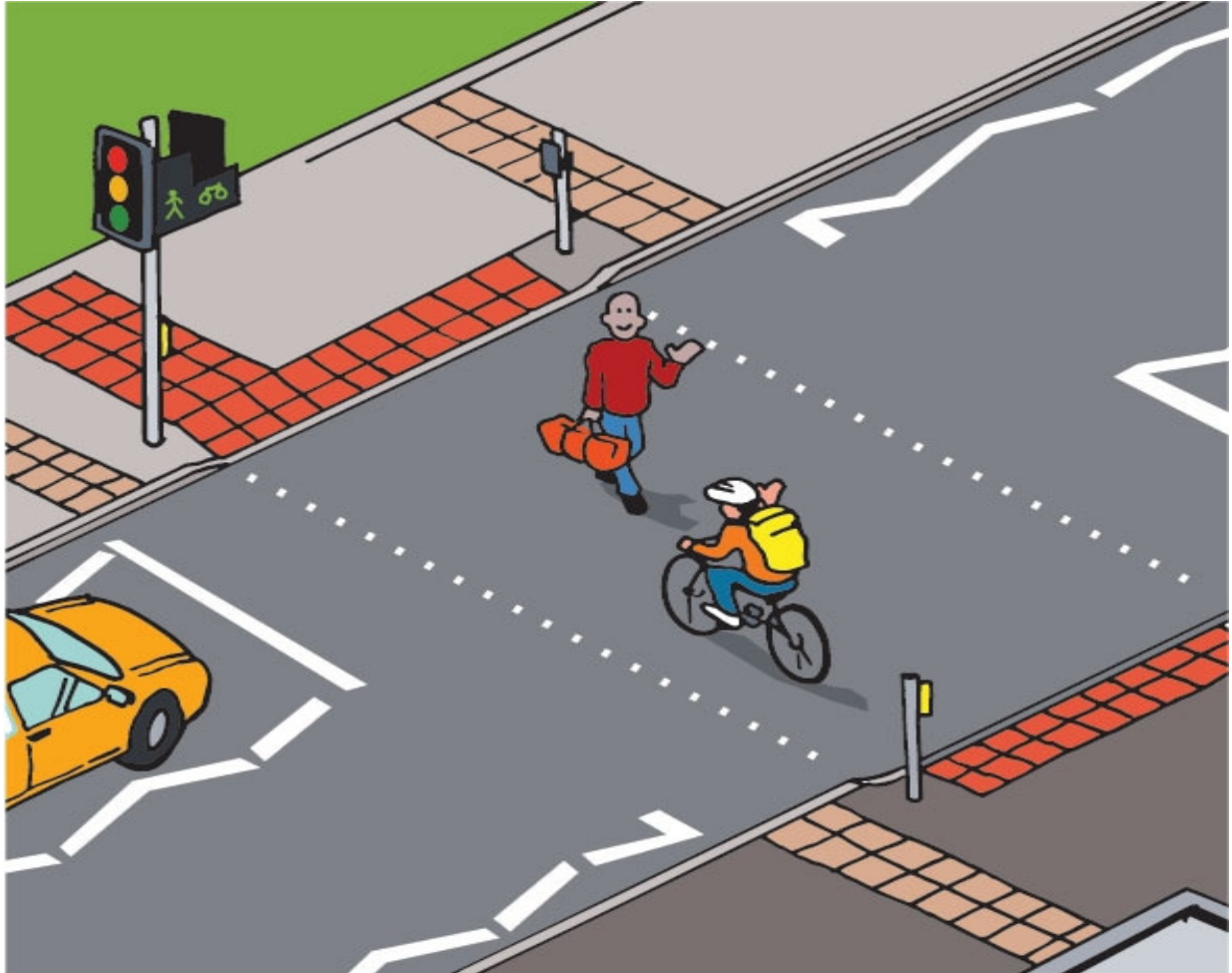
The green man appears on the box to your right as this is the direction of the traffic.

Press the button and wait for the green man to show.



Toucan Crossing

Toucan= Two Can (Two types of people can cross)



Two people who can cross are pedestrians and cyclists. Therefore, usually found along cycle routes.

The crossing is wider so that both people and bikes have room.

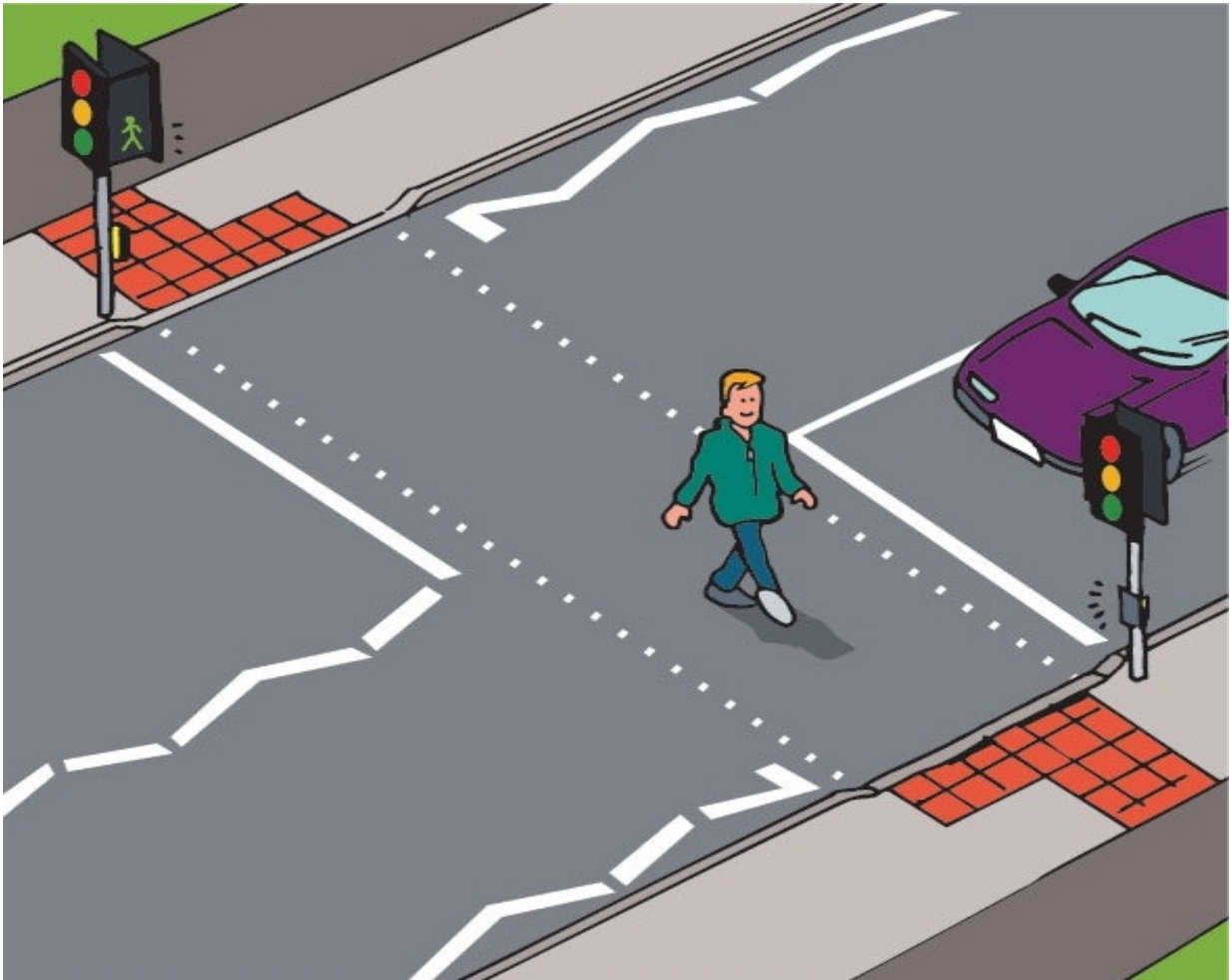
A red/green man and bike appear on the box to your Right.

Due to the width, more push buttons may be present.



Pelican Crossing

PELICAN = Pedestrian Controlled Crossing



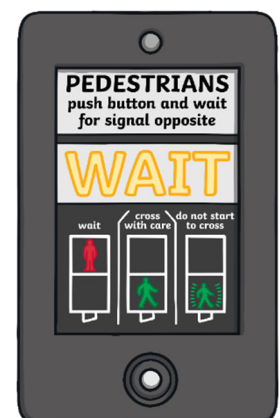
Pelican and puffin crossings are very similar but there are some important differences.

A green/red man appears on the pole across the road.

'WAIT' appears on the box to your right and the button lights up.

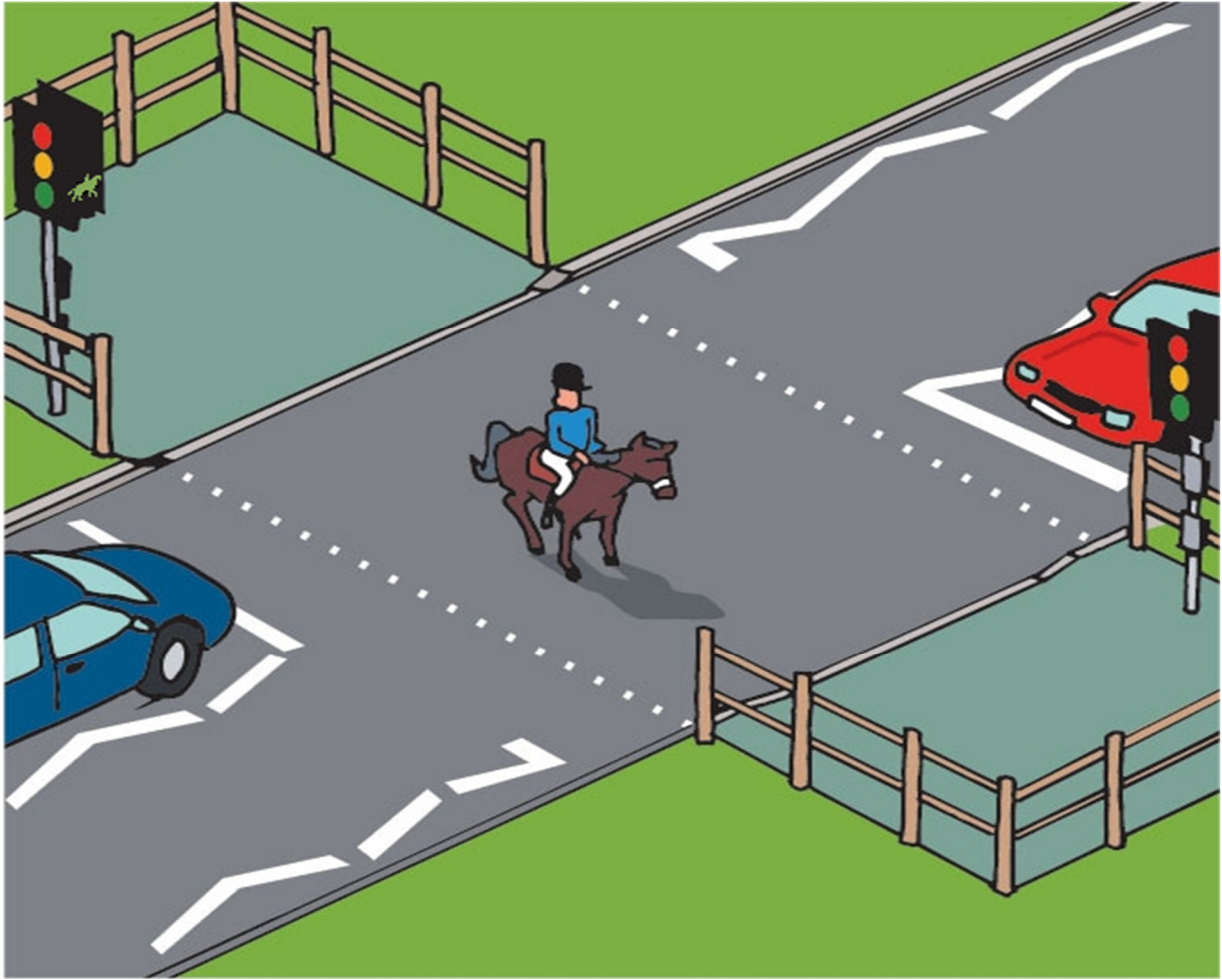
GREEN- Safe to cross.

RED- Not safe to cross.



Pegasus/Equestrian Crossing

7



A Pegasus/ Equestrian Crossing is for horse riders to cross without having to dismount their horse. The push button is higher up the pole. There is a lower button for pedestrians too.

Instead of showing a red and green man, it will be replaced by a horse.



School Crossing Patrol

Known as Lollypop Lady or Lollypop Man



Always cross in front of the lollypop person. They need to be able to see that everyone has crossed the road safely.

Be courteous and say thank you.

DON'T run, walk straight across.

Don't cross till they tell you.

DON'T ride your bike/scooter, get off it and walk across.

Other Crossing Points

Pedestrian Refuge Islands (Traffic Islands)

These are found halfway across the road. They are found on busier roads, so that pedestrians can cross each side of the road separately rather than having to wait for both directions to be clear.



Subways

These are passages under the road to get from one side to the other. A bit like a tunnel, and commonly found in city centres.



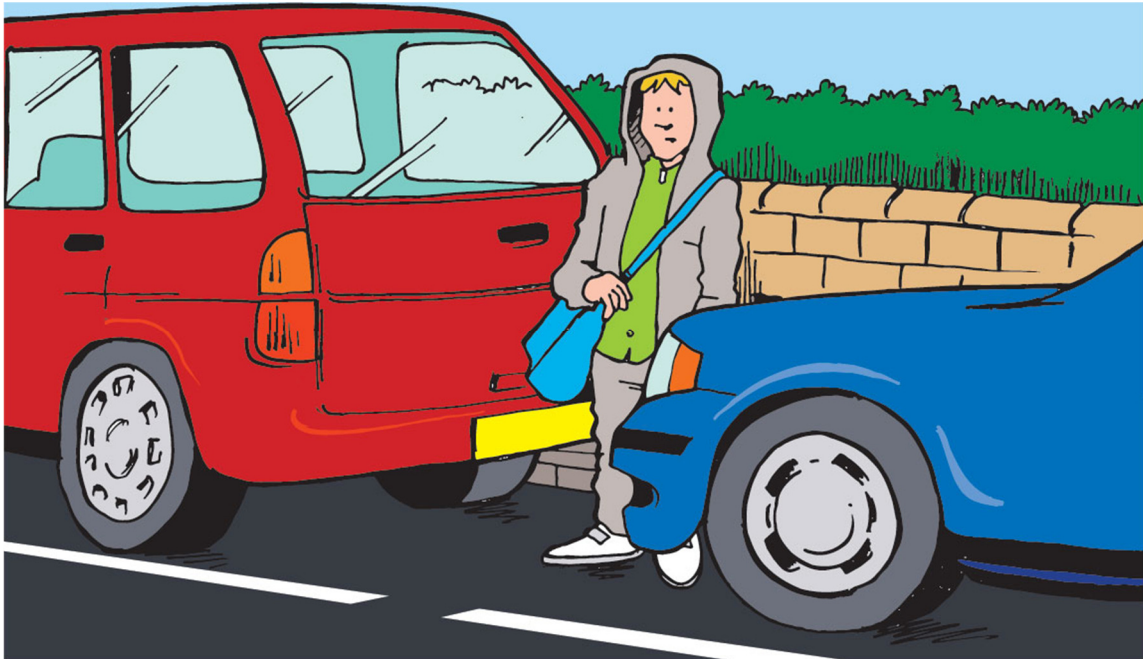
Footbridges

Footbridges are used along busy roads to get from one side to the other without having to cross the road itself. These are high as they need to let large vehicles pass underneath.



Crossing Between Parked Cars

10



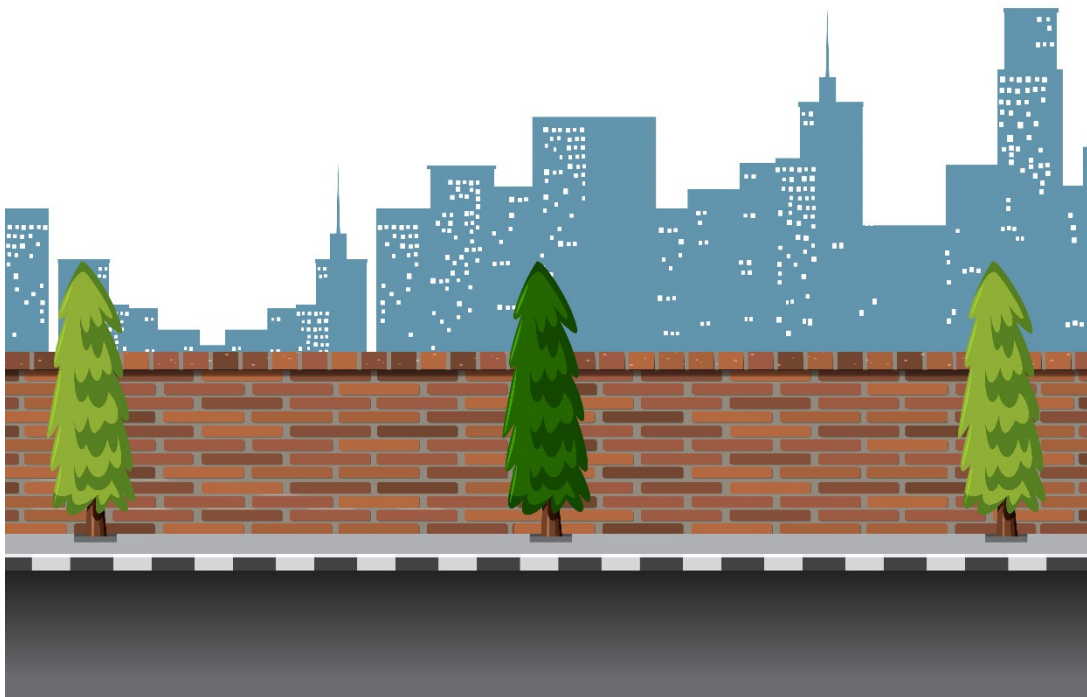
We will see a lot of streets that have parked cars. Crossing between parked cars can be very dangerous. You may not be able to see the road clearly in both directions. A car may not see you between the cars also. However, sometimes we may need to cross between parked cars, and in this case you should:

- Find two cars that are low down so passing vehicles can see you easily.
- Check that there is no one inside the vehicle and that they are not going to move off.
- Crossing between parked cars does not mean ones who have stopped at traffic lights.
- Use the windows to see if there are any cars.
- When you reach the edge of the cars, peer around to look for traffic. When it is safe, follow your Green Cross Code.

Crossing without a 1 1

Pedestrian Crossing

It is always safer to walk a little further to use a safer crossing such as zebra, pelican etc. Crossings have been put there because it is dangerous to cross certain roads without them.



Sometimes there may not be any safer crossings nearby, therefore you need to know how to use the Green Cross Code to get across the road by yourself.

Look for a straight stretch of road where you can see clearly both ways into the distance. Take a step back from the kerb and follow the **Green Cross Code**. THINK, STOP, LOOK, WAIT, LOOK AND LISTEN AGAIN, ARRIVE ALIVE!

Top Tips

1

2

- Never cross at the brow of a hill, corners, or sharp bends.
- Look into the distance as well as nearby.
- Listen for sirens and step to the back of the footway as cars can sometimes pull onto the pavement to let emergency vehicles pass.
- Some vehicles are hard to hear, especially electric ones and cycles.
- Never presume drivers can see you. They aren't always looking out for you as they have got a lot of information to process. You need to look out for yourself, don't put yourself in dangerous positions.
- ALWAYS cross in a straight line and not diagonally, this takes twice as long to walk across the road.
- Friends look out for each other – don't mess around near the road.